

Etching FAQs

What is etching?

Etching is the process used to transfer graphic elements (logos, etc.) onto a hard metal surface -such as metal fabric.

What fabrics can be etched?

Almost any material can be etched, but some materials work better than others.

What materials work best for etching?

Typically Omega Designs are preferred due to the flat front surface. Rallye BMW is an example of graphics etched onto Omega 1510 Design. The etching for the Dayton Convention Center was completed using Omega 1520 Design.

Are the graphics for etching limited in any way?

Graphics are only limited by the intricacy of the details. Because our metal fabrics are woven and contain open areas, some of the more intricate details may be lost.

What is needed to produce the graphics for etching?

AutoCAD files are needed to create the masking for the requested graphics.

What is the process for creating the graphics to be etched?

Once the graphics have been created in an AutoCAD program, the graphics are transferred onto grids and a "mask" is cut to the shape/size of the graphics; the metal fabric is etched using this mask.

What variables control the vibrancy of the graphics?

Vibrancy of the graphics is controlled by the duration of the blasting and the blasting media used.

Will the graphics fade over time?

Since the graphics are etched directly onto the metal surface, there is no danger of the graphics fading.

Do the etched metal panels require special maintenance?

No. As with all of GKD's metal fabrics, maintenance is simple. For interior applications, all that is required is a simple wipe down or vacuum. For exterior applications, a rinse with mild soap and water is all that is usually needed. Pressure washing may be used if additional cleaning is necessary. Graffiti and other discolorations can be removed using an approved stainless steel cleaner.

Do the etched metal panels require special lighting?

No special lighting is required.

Can the etching be viewed from both sides?

Because the graphics are etched on the flat surface of the front of the panel, they are not clearly visible from the back of the panel. However, both sides of the metal fabric may be etched if desired.

What is the maximum panel size?

The maximum width is 26 ft.; there is no limit to the length.

How are the etched panels installed?

Installation for the etched panels is the same as the installation for any of our other GKD fabrics. Depending on the material being etched, installation will consist of either hanging or framing the panels.

How much do etched panels cost?

Etching of the panels costs approximately \$15-\$20 per square foot for a façade scale project, depending on the sharpness and complexity of the graphics being etched.

For additional information, please contact

GKD-USA, Inc.

825 Chesapeake Drive

Cambridge, MD 21613

410.221.0542 • 800.453.8616

sales@gkdusa.com • www.gkdmetalfabrics.com

CCLRT - West Bank Station

**Location**

Minneapolis MN

Architect

AECOM NY

Project Type

Public Buildings and Arts
Transportation

The Central Corridor Light Rail Transit (CCLRT) West Bank Station features Nancy Blum's artwork etched by GKD onto Omega metal fabric and soaring bird imagery fabricated of stainless steel by Fedtech and mounted onto Omega metal fabric. This project weaves artwork into the aesthetic, sunshade and safety functionality of GKD metal mesh. This station serves the Cedar-Riverside and University of Minnesota communities. The artist represented areas immigrant residents through "patterns on architectural mesh and depicting the migratory bird thruway of the nearby Mississippi" The two stairwell platforms are the location of the integrated artwork.

Customer

Amcon Construction

Date

2013

Key Contractor

Artist Nancy Blum

North American Headquarters

GKD-USA Inc
825 Chesapeake Drive
Cambridge MD 21613
T 800-453-8616
T 410-221-0542
F 410-221-0544
sales@gkdusa.com
gkdmetalfabrics.com



Case Study

Applications

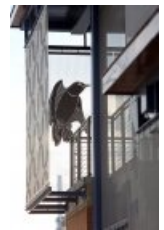
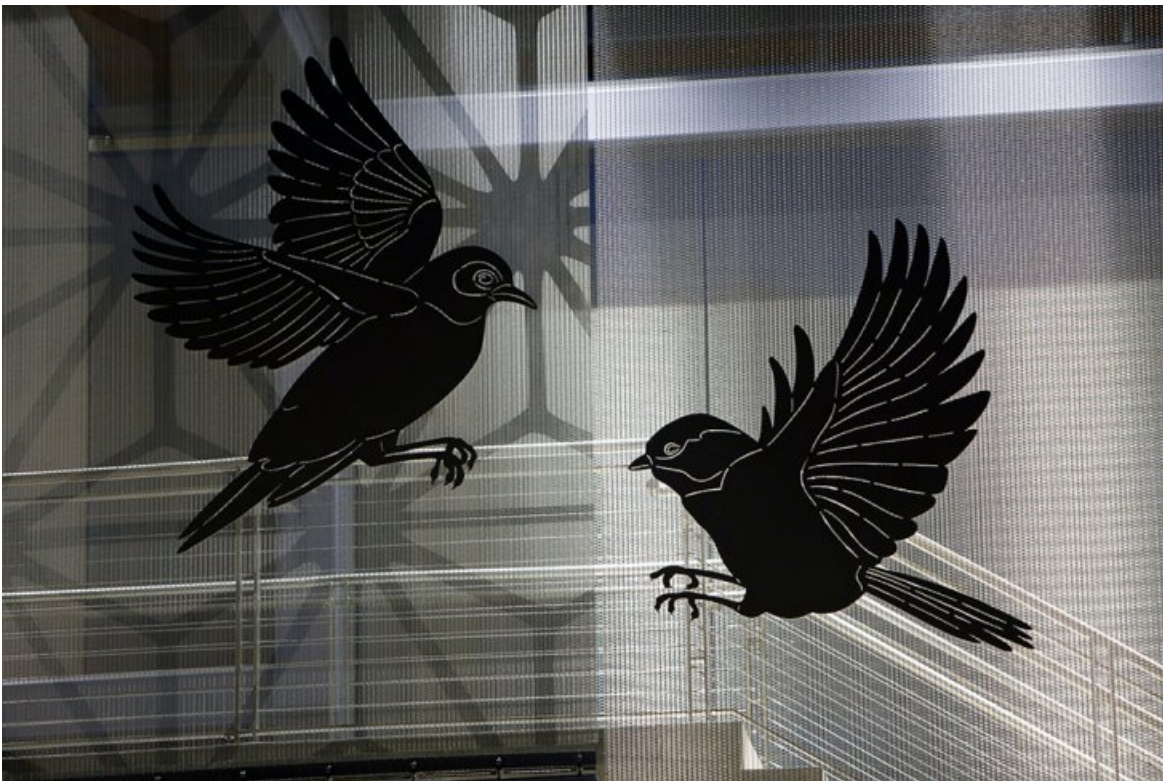
Solar Management
Facades
Etched Graphics

Metal Fabrics

Omega 1510
Omega 1550

System Components

Flat & angle
Flats with clevis
Frame
Woven-in bar with eyebolt



FIU - Century Bank Arena

**Location**

Miami FL

Architect

Gould Evans Architects

Project Type

Stadiums and Arenas

Size/Scope of Project

5 panels, 1600 ft²

Customer

Florida International University

Date

2011

Key Contractor

Arellano Construction

North American Headquarters

GKD-USA Inc
825 Chesapeake Drive
Cambridge MD 21613
T 800-453-8616
T 410-221-0542
F 410-221-0544
sales@gkdusa.com
gkdmetalfabrics.com



The FIU Golden Panther is front and center, ready to greet the tens of thousands coming to the Century Bank Arena. The GKD etching process was used on the entrancer panel to achieve the branding objective of the University. This tensioned flexible metal fabric panel, and those flanking it on either side, also provide transparent solar management facading. Because of proven hurricane force wind capability of the fabric and attachment designs, GKD is the first choice in architectural metal facades in the Southeast USA.

Applications

Sunshade / Solar Management

Facades

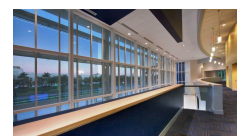
Etched Graphics

Metal Fabrics

1520

System Components

Extended loop



Location

New York, NY

Project Type

Corporate Buildings

Retail and Restaurants

Architect

Hariri & Hariri - Architecture

North American Headquarters

GKD-USA Inc
825 Chesapeake Drive
Cambridge MD 21613
T 800-453-8616
T 410-221-0542
F 410-221-0544
sales@gkdusa.com
gkdmetalfabrics.com

With a nod to 1970's supergraphics, Juan's familiar face was etched onto the three-story high screen of Omega 1520 metal fabric. The final result added an air of sophistication and ethereal elegance to East 57 Street.

Applications

Sunshade / Solar Management

Facades

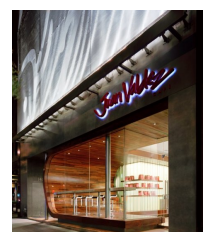
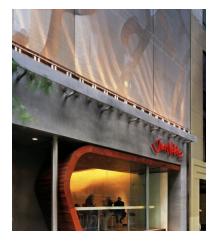
Etched Graphics

Metal Fabrics

Omega 1510

System Components

Extended loop



Piper High School

**Location**

Kansas City, KS

Date

2009

Key Contractor

Kaw Roofing

Size/Scope of Project

520 ft²

Architect

DLR Group

Project Type

Educational Institutions

LEED PLATINUM

North American Headquarters

GKD-USA Inc
825 Chesapeake Drive
Cambridge MD 21613
T 800-453-8616
T 410-221-0542
F 410-221-0544
sales@gkdusa.com
gkdmetalfabrics.com



Sunshading, daylighting, graphic design and space-utilization create a unique, 21st century learning environment. To promote school spirit and create an easily identifiable main entrance area, the school's mascot, a pirate, was etched by GKD into the Omega 1510 woven metal fabric. Design architect Ken Graham, AIA, LEED AP, selected the fabric from GKD, based on its durability, sustainable attributes and aesthetics.

Applications

Sunshade / Solar Management

Facades

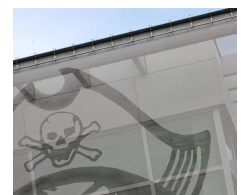
Etched Graphics

Metal Fabrics

Omega 1510

System Components

Extended loop



Location

Roslyn, NY

Date

2005

Size/Scope of Project

19 panels. 6050 ft²

Architect

HLW International, LLC

Project Type

Corporate Buildings
Parking Structures

**North American
Headquarters**

GKD-USA Inc
825 Chesapeake Drive
Cambridge MD 21613
T 800-453-8616
T 410-221-0542
F 410-221-0544
sales@gkdusa.com
gkdmetalfabrics.com



GKD's precision etched graphic process brings the brand to life at this BMW dealership. Sunlighting and spotlighting effects change the appearance of the media, almost continuously.

Applications

Parking Facades
Facades
Etched Graphics

Metal Fabrics

Omega 1510

System Components

Woven-in bar with eyebolt

